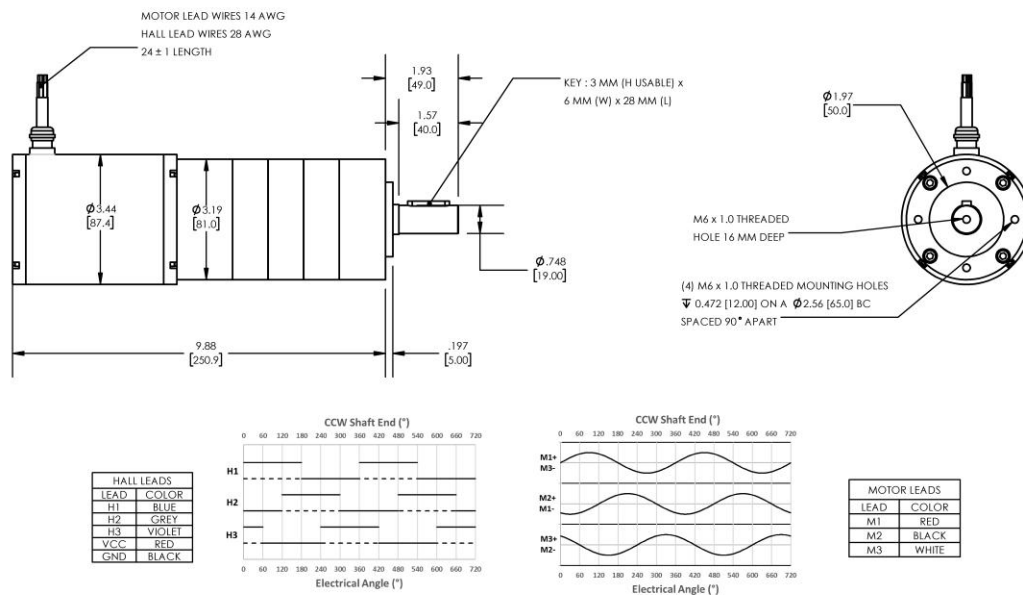


Model Number:
MMP BL87-435B-36V GP81-169


DIMENSIONS ARE INCHES [MM] UNLESS OTHERWISE STATED

PLANETARY GEARMOTOR OUTPUT PARAMETERS:	VALUE	UNITS	TOLERANCE
Gearhead Ratio (exact)	168.84 : 1		
Gearhead Shaft Output Speed (at full-load)	20	RPM	MAX
Gearmotor Rated Continuous Torque	2105	In-Lbs	MAX
Gearmotor Rated Peak Torque	2125++	In-Lbs	----
Gearhead Standard Backlash	36	Arc Minutes	MAX
Gearhead Efficiency	70%	----	----
Output Shaft Radial Load Capacity	225	Lbs	MAX
Output Shaft Axial Load Capacity	45	Lbs	MAX
Gearmotor Total Weight	14	Lbs	MAX

++ All Peak Torque values are dependent upon duty. Contact our sales office for details.

DC MOTOR PERFORMANCE PARAMETERS:	VALUE	UNITS	TOLERANCE
Rated DC Voltage	36	DC VOLTS	----
Rated Continuous Current	27.1	AMPERES	----
No-Load Speed	4390	RPM	MAX
Rated Speed	3416	RPM	+/- 15%
Rated Continuous Power Out	720	WATTS	+/- 15%
Rated Continuous Torque	285	OZ-IN	----
Peak Torque (motor only)	902	OZ-IN	----
No-Load Current	1.38	AMPERES	MAX
Back EMF Constant (Ke)	8.2	V/KRPM	+/- 10%
Torque Constant (Kt)	11.1	OZ-IN/AMP	+/- 10%
DC Armature Resistance	0.30	OHMS	+/- 15%
Armature Inductance	0.27	mH	+/- 15%
Armature temperature	155	DEG. C	MAX

NOTES:

- ENCODER & BRAKE OPTIONS AVAILABLE – [FOLLOW THIS LINK FOR DETAILS](#)
- NEMA MOUNTING FLANGE OPTION AVAILABLE – [FOLLOW THIS LINK FOR DETAILS](#)

MIDWEST MOTION PRODUCTS
DESIGN, MANUFACTURING & DISTRIBUTION - MOTION CONTROL EQUIPMENT
www.midwestmotion.com

 email: sales@midwestmotion.com